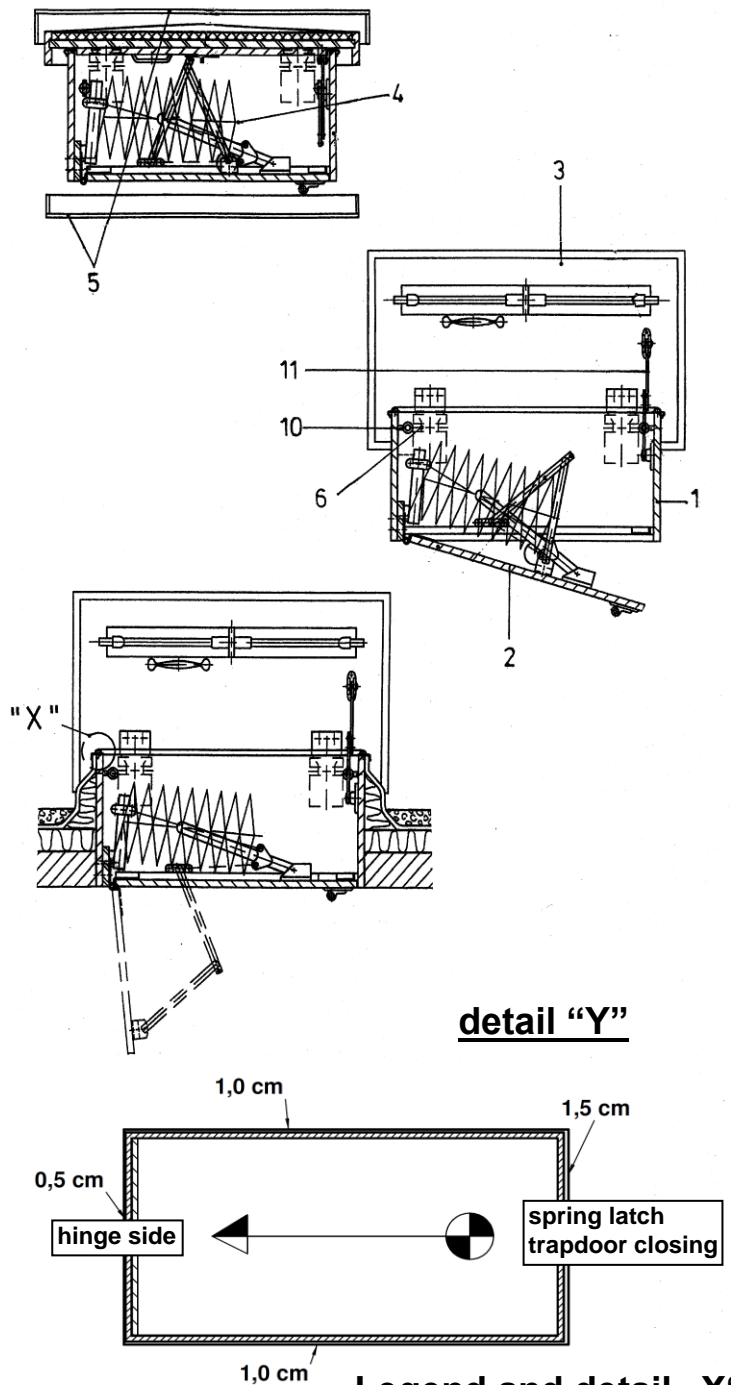


## Installation instructions for flatroof access with wooden hatchbox

### Installation only allowed by authorized persons

It is possible to install the wooden hatchboxes complete from above. Please check before installation the dimensions of the hatchbox and the structural opening (exceed). Please remove the upper cover and all necessary parts if you try to install the flat roof access from below. The eyelets in each corner of the flat roof access are a help for the installation. The angle of the lifting gear is maximum 45° against the vertical line by consistent load. Please make sure that the load of all four hanging up eyelets is max. 5 KN. Please note the German VBG (accident-prevention regulations)

1. Please remove packing material
2. Please open the upper cover and if there are stop linkages and gas springs please remove the stop linkages and the gas springs. Please remove the bolts of the hinges and remove the upper cover. ( Attention ! The gas springs are under pressure. Please hold the upper cover and remove first the stop linkage ). If there is a frame with double seal please remove the frame ( **please see page 3** ). Please slide the hatchbox through the structural opening.
3. On the outside of the hatchbox in dependent of the ceiling height ( thickness of ceiling construction + 20 mm for adjustment ) please fix wooden leashes ( min. 30 x 30 x 1000 mm ) with screws for wood ( min. 4,5 x 50 mm ) five times on each side. Please put the hatchbox into the structural opening ( it is possible to open the lower trapdoor ). Please adjust the hatchbox with wooden wedges until the hatchbox is in the correct position ( please use for the adjustment a spirit level ). To adjust the position of the hatchbox inside the structural opening please see **detail "Y"**. Please check the distance between frame and trapdoor and adjust the distance. Please line the fixing points with small wooden sheets and fix the hatchbox in the correct position. Our suggestion for hatchboxes up to 150 x 100 cm: on each long side 3 screws ( minimum diameter 6 mm x 70 mm length ) and 2 screws on each short side ( minimum diameter 6 mm x 70 mm length ).
4. If there is a guard rail for the flat roof access ordered please see **installation instruction F855-91613 or F885-91614**.
5. Please fix the removed parts and the upper cover. ( Attention ! please install the gas springs first, close the upper cover ( not completely ) and fix the stop linkage ).
6. The upstand between the ready roof level and the upper cover of the flat roof access must be protected with insulation material, roofing felt and vapour barrier against influences of the weather ( please see **detail "X"** and **sheet: cross section flatroof access F885-91478** ). All parts made of wood in unfinished state must be painted with colourless varnish against fungus. The connection between the hatchbox and the building ( installation gap ) must be filled with insulation material.

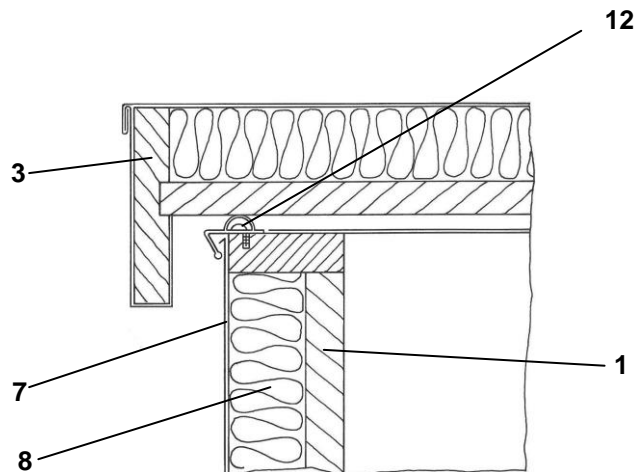


**Legend and detail „X“  
see page 2**

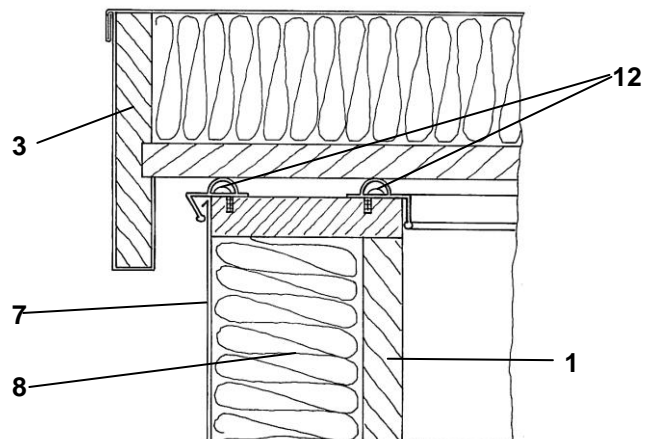
## Detail „X“

### Insulation and Sealing of Type Basic

- 1) hatchbox
- 2) lower trapdoor
- 3) upper cover
- 4) Stair
- 5) Packing material
- 6) hinge bolt
- 7) roofing felt (building side)  
max. 8 – 10 mm thick
- 8) insulation (building site)
- 9)
- 10) hanging up eyelet
- 11) stop linkage
- 12) seal



### Insulation and Sealing of Type Profi

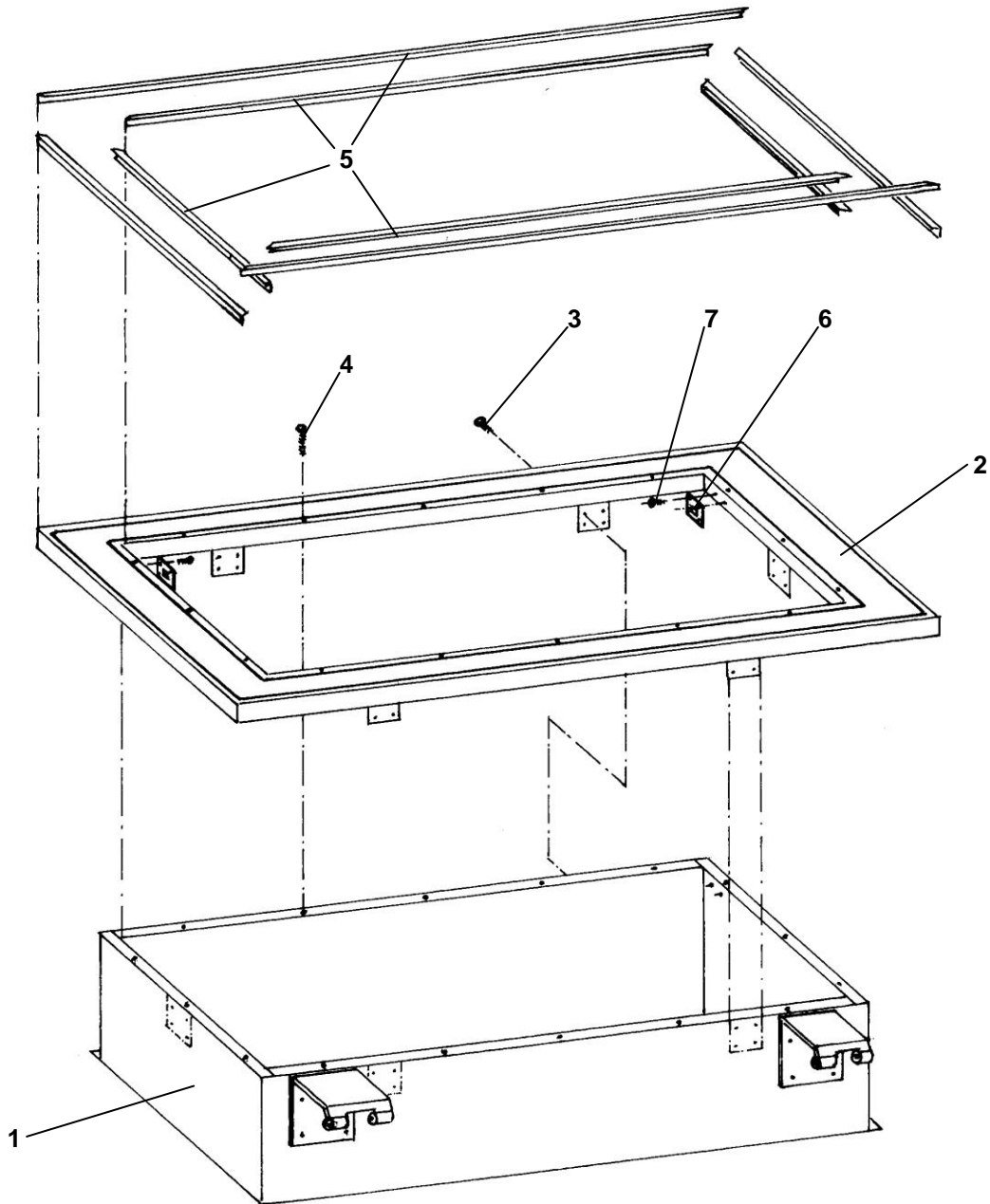


## **Attention:**

**If the flat roof access is inserted in the building before all plaster works and screed works have been made please make sure that the underside of the flat roof access is safe against humidity and moisture ( plastic foil and adhesive tape ). Please hold the flat roof access closed until the humidity / moisture inside the building have reached normal values.**

## Installation instructions of wooden frame (Ausführung Profi)

Type Profi no inner sealing (Pos. 5) for Type Basic



1. hatchbox ( flat roof access)
2. wooden frame
3. screw for chipboard, Pan Head, Ø 5x20
4. screw for chipboard Ø 4,5x55
5. seal
6. sheet metal of locking mechanism
7. screw für chipboard Ø 4x20