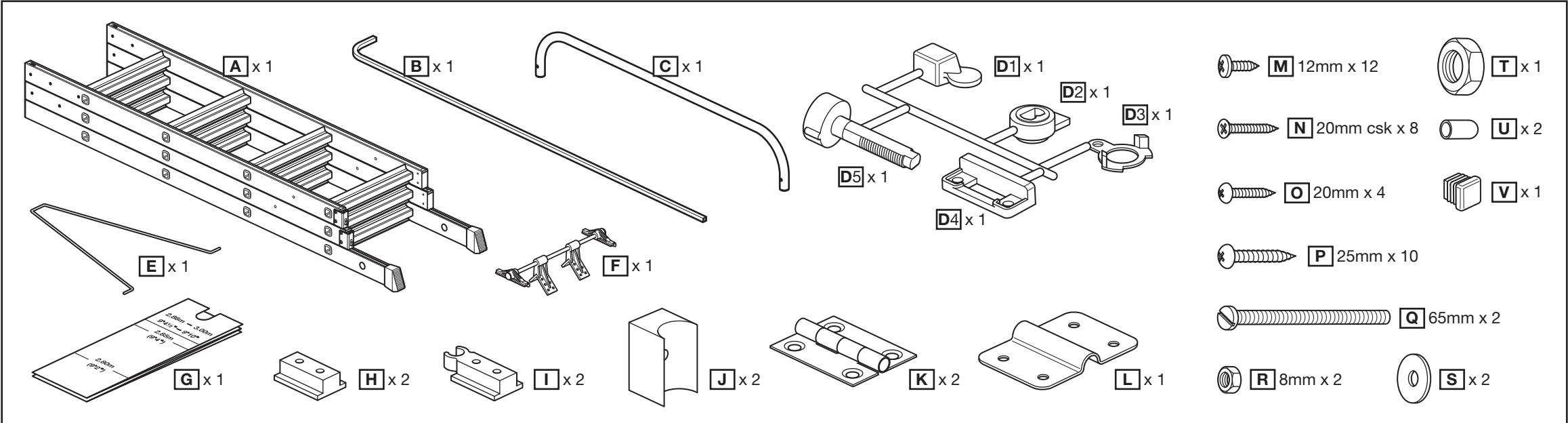


**⚠ Safety Information - Before installing or using the loft ladder carefully read and follow the safety information below.**

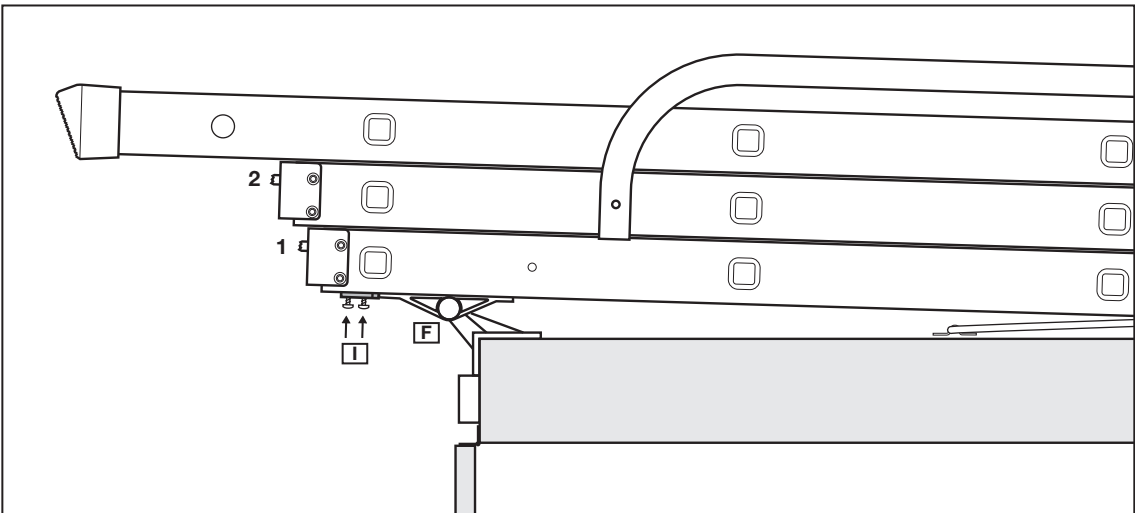
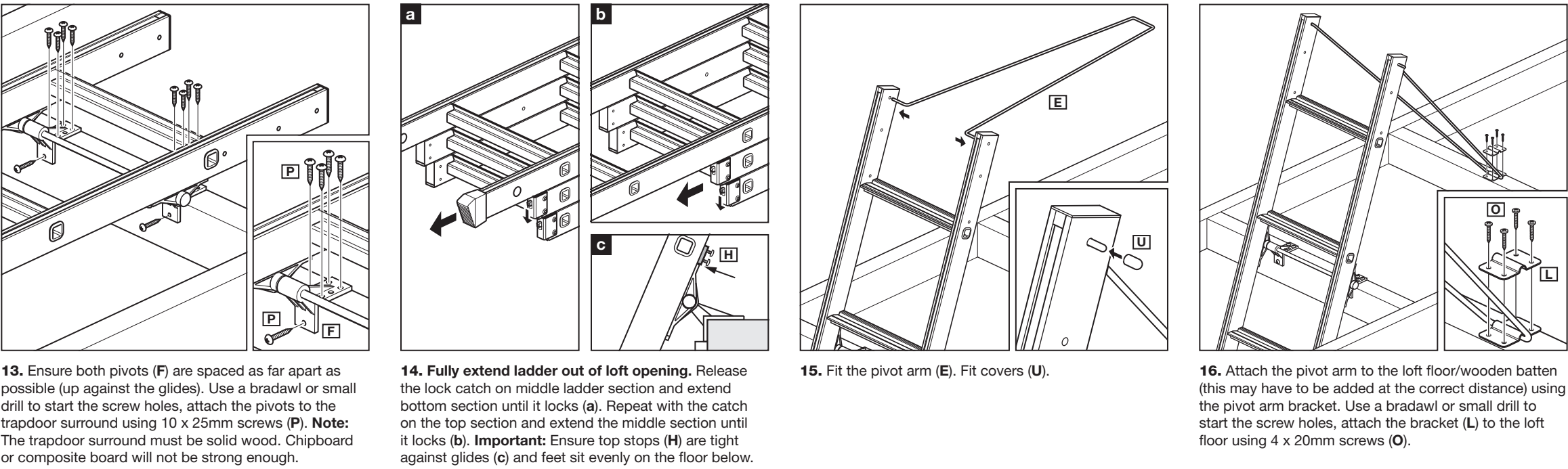
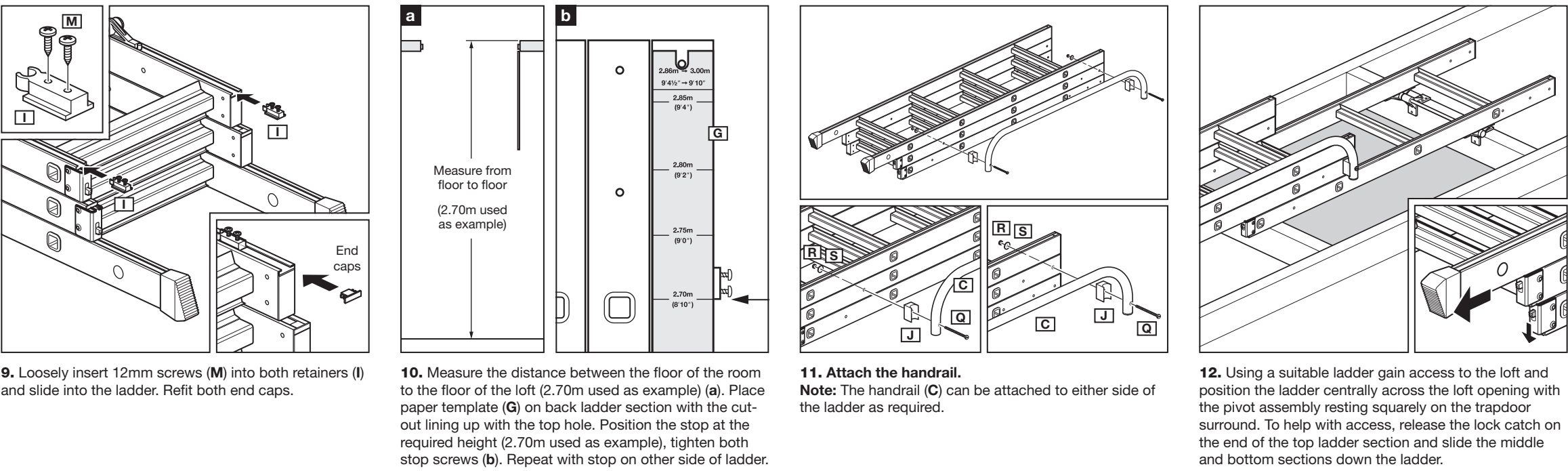
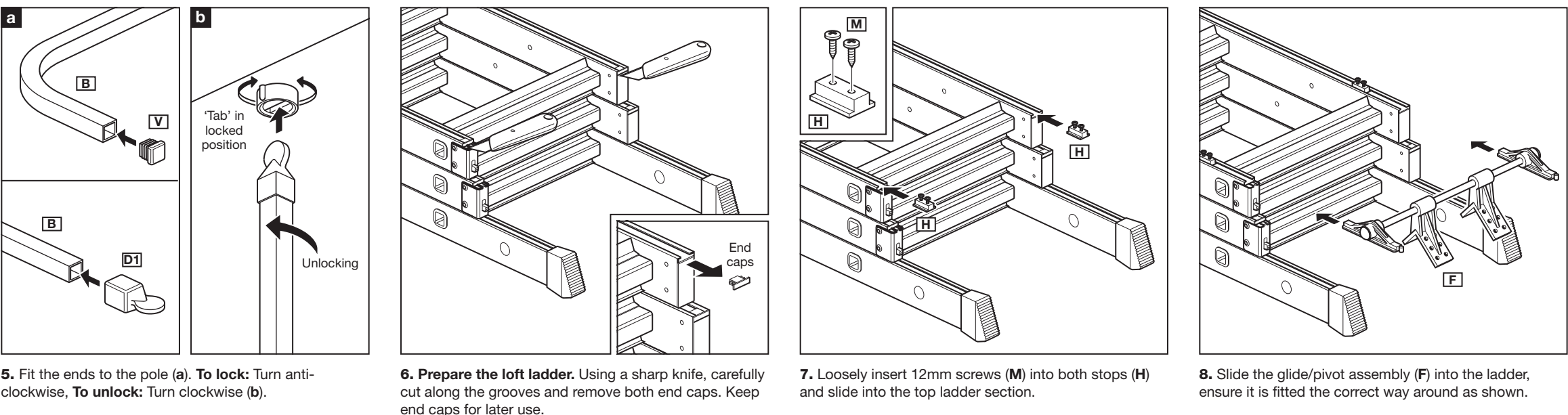
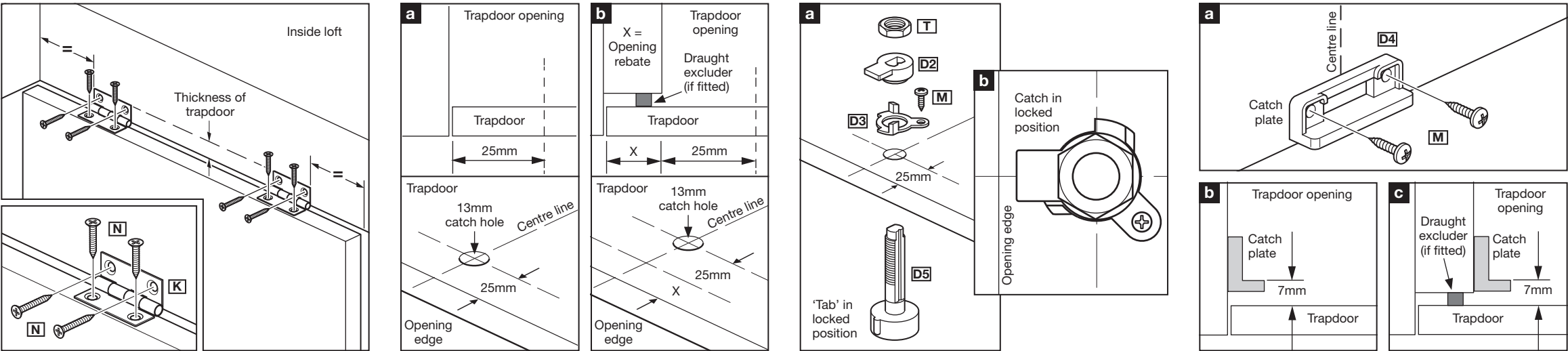
- WARNING:** The ladder must not be used until it has been fully installed in the loft.

  - WARNING:** Ensure the ladder is fully extended, both lock catches are fully engaged and the top stops are against the guide/pivot assemblies before each use.
  - WARNING:** Only to be used by one person at a time.
  - IMPORTANT:** In some cases it may be necessary to install additional wooden braces or noggins to be able to fix the pivot arm in the correct position.
  - IMPORTANT:** During installation ensure the work area is kept clean and free from obstructions.
  - IMPORTANT:** Non-authorized parts may be dangerous and will invalidate the warranty.
- IMPORTANT:** Read and follow all of the safety information on the side of the ladder.
  - IMPORTANT:** When not in use, stow the ladder securely.
  - IMPORTANT:** All ladders have potential injury risks, please follow these instructions at all times.
  - IMPORTANT:** A separate suitable ladder is needed to access the loft during installation.
  - IMPORTANT:** Two persons are needed to safely complete the installation, one person working from inside the loft, the other on the ground below.
  - DO NOT** use the ladder for any purpose other than that for which it was designed.
  - DO NOT** install or use until you have read the instructions completely. Ensure you understand the limitations and potential hazards.
- DO NOT** fit loft ladder brackets, pivots or other fixings to chipboard or composite board.
  - DO NOT** install if parts are missing or damaged.
  - DO NOT** use if parts are missing or damaged.
  - DO NOT** allow children to climb the ladder.
  - DO:** Wear non-slip footwear and if necessary clean the soles before using the ladder.
  - DO:** Ensure the ladder rungs are horizontal and both ladder feet are on the floor.
  - DO:** Always grip the ladder when climbing. Always try to keep three points of contact with the ladder.
  - DO:** Always face the ladder when ascending and descending.
  - DO:** Only carry light materials (up to 10kg) up the ladder. Never exceed the total static load of 100kg.
- DO:** Keep these instructions in a safe place for future reference.
  - DO:** Ensure there is a good flat access area at the base of the ladder to dismount safely. A minimum area of 1 square metre is recommended.
  - DO:** Ensure there is enough clear internal loft space for the ladder to be stowed before attempting installation (see specifications).
  - DO:** Keep children, animals and unauthorised persons away from the working area.
  - DO:** Ensure there is sufficient lighting in the work areas.
  - DO:** Keep the ladder in good condition.
- Please check that you have all the components against the list below and that they are in good condition before installation. If any components are missing contact the retailer.



**Tools and Equipment needed:** Suitable ladder to access loft, Ruler & tape measure (3 metre), Sharp knife, Pencil, Bradawl (sharp point), Drill, 2mm & 13mm wood drill bits, Phillips screwdriver (medium), Flatblade screwdriver (medium), 8mm & 19mm Spanners, Lighting for loft.

**Assembly and Installation**



up to the glide/pivot assembly (F) and clip onto the glide. Ensure both retainers (I) are the same distance from the end of the ladder and tighten the 4 retainer screws. **Important:** Ensure ladder clears trapdoor when closed.

**Operating Instructions**

