

## **Fixing instructions for Mini concertina**

Please read this guide carefully before fixing and follow the instructions given.

**Caution:** This loft ladder is to be used in household only.

- Any modification of the product or non-true to uses described in the installation instruction cancels the manufacturer's warranty.
- The loft stair must be stored horizontally in a dry atmosphere.
- This loft stair is only suitable for domestic use in a dry surrounding.
- The loft stairs must not be exposed to weather outside.
- The loft stair must be used until the cover has been opened completely, the spring arms in their end position and the loft stair rests safely on the floor.
- To increase the life of the loft stair, protect the untreated wood parts with a surface treatment.
- Only original parts must be used for repairs.

### **1.0 Hints before fixing the hatchbox**

Please check the sizes both of opening and outer dimensions of hatchbox

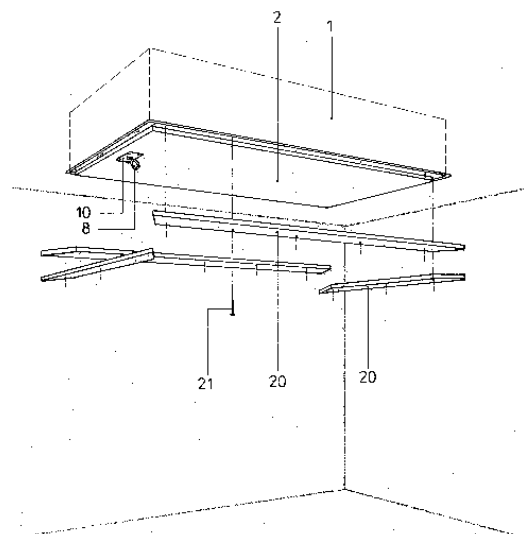
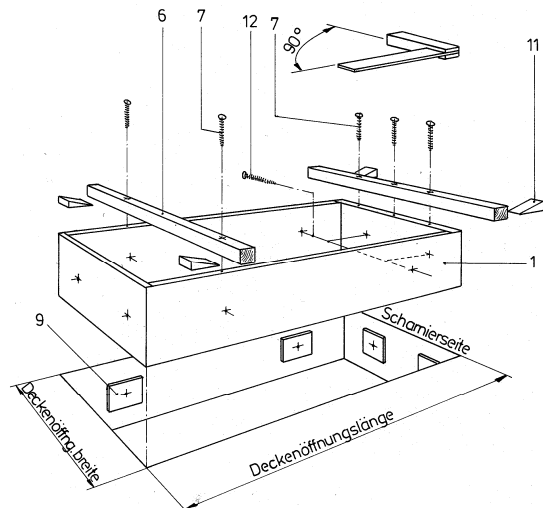
- 1.1 Fixing material is not included. You will need:  
2 wooden leashes 30x30x.. mm, 5 screws minimum 4,5 x 70 mm and 6 screws minimum 6 x 70 mm
- 1.2 Protection of surface: all wooden parts are to be grounded and varnished before fixing. Both sides of cover ( and face ) have to be sealed.

### **2.0 Preparations for fixing the hatchbox**

- 2.1 Fix Leashes (6) ( 30x30x..mm ) with screws (7) (minimum 4,5x70 mm ) as shown in drawing
- 2.2 Screw ringscrew (8) into latch.

### **3.0 Fixing of hatchbox**

- 3.1 Hatchbox (1) is brought from above into the opening. Place wooden wedges (11) under the leashes (6) until the hatchbox is in a horizontal position and is equivalent with the underside of ceiling ( see detail X for correct position )
- 3.2 Place hatchbox (1) central into opening. Take care that it is rectangular. Please see detail X. Make sure that there is wood (9) between hatchbox (1) and opening at the places the screws are planned
- 3.3 Fix hatchbox (1) safely with screws (12) ( minimum 6 of dimension 6x70 mm )
- 3.4 The springs can be tightened by changing their position in bracket (14). This might be necessary when fixing an additional wooden ceiling on the cover.



**Caution:** Any works at the springs only with cover closed! Danger of accident!

## 4.0 Fixing of architrave

Strips (20) can be fixed with nails (21) size 1.8 x 35 mm. Please see Detail X, the distance between the nails must not exceed 200 mm.

For fixing of plastic strips please see separate fixing instruction added to the plastic strips.

## 5.0 Fixing of 3 - sided guardrail

If a guardrail was ordered, there will be separate fixing instructions.

## Maintenance:

### Preserve function for a long time.

Please check if all screws, nuts and fixing parts are tight annually, or, when using the stair more intensive often.

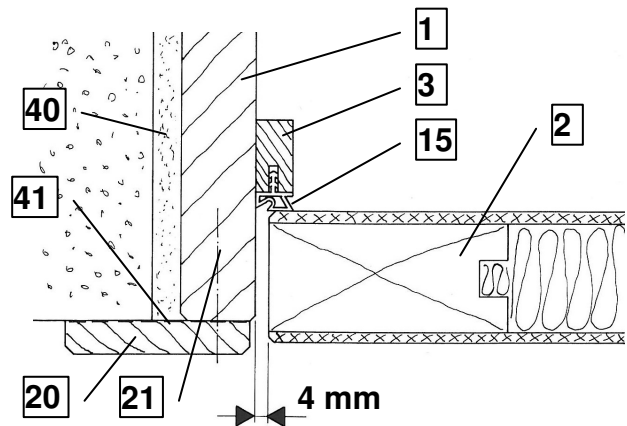
All moving parts should be oiled or greased regularly at their bearings and be checked on abrasion.

## Hints for user:

- Do not use the stair without handrail and 3-sided guardrail.
- The maximum load of the stair must not exceed 150 KG.
- When operating and using the stair take care not to jam.

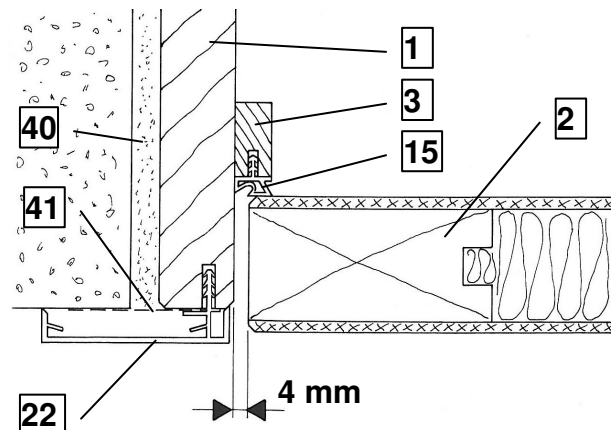
## Detail „X“

With wooden strips



## Detail „X“

With plastic strips



- 1) hatchbox
- 2) trapdoor
- 3) Stop strip
- 15) seal
- 20) wooden strip
- 21) nail
- 22) plastic strip
- 40) insulation
- 41) damp protection